

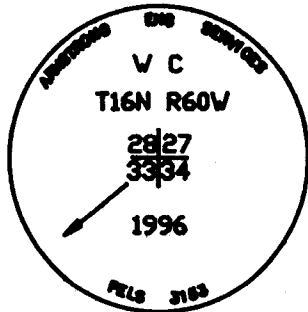
State of Wyoming Corner Record

(In compliance with the CORNER PERPETUATION AND FILING ACT, Wyoming Statutes, 1977, Section 36-11-101, et. seq., and the Rules and Regulations of the Board of Registration for Professional Engineers and Professional Land Surveyors.)

Reverse side of this form may be used if more space is needed.

Record of original survey and citation of source of historical information (if corner is lost or obliterated). Description of corner monumentation evidence found and/or monument and accessories established to perpetuate the location of this corner. Sketch of relative location of monument, accessories, and reference points with course and distance to adjacent corner(s) (if determined in this survey). Method and rationale for reestablishment of lost or obliterated corner.

References used corner recordations on file in the Laramie County Clerks Office and Wyo Dept. of Transportation Project No. S41(2)



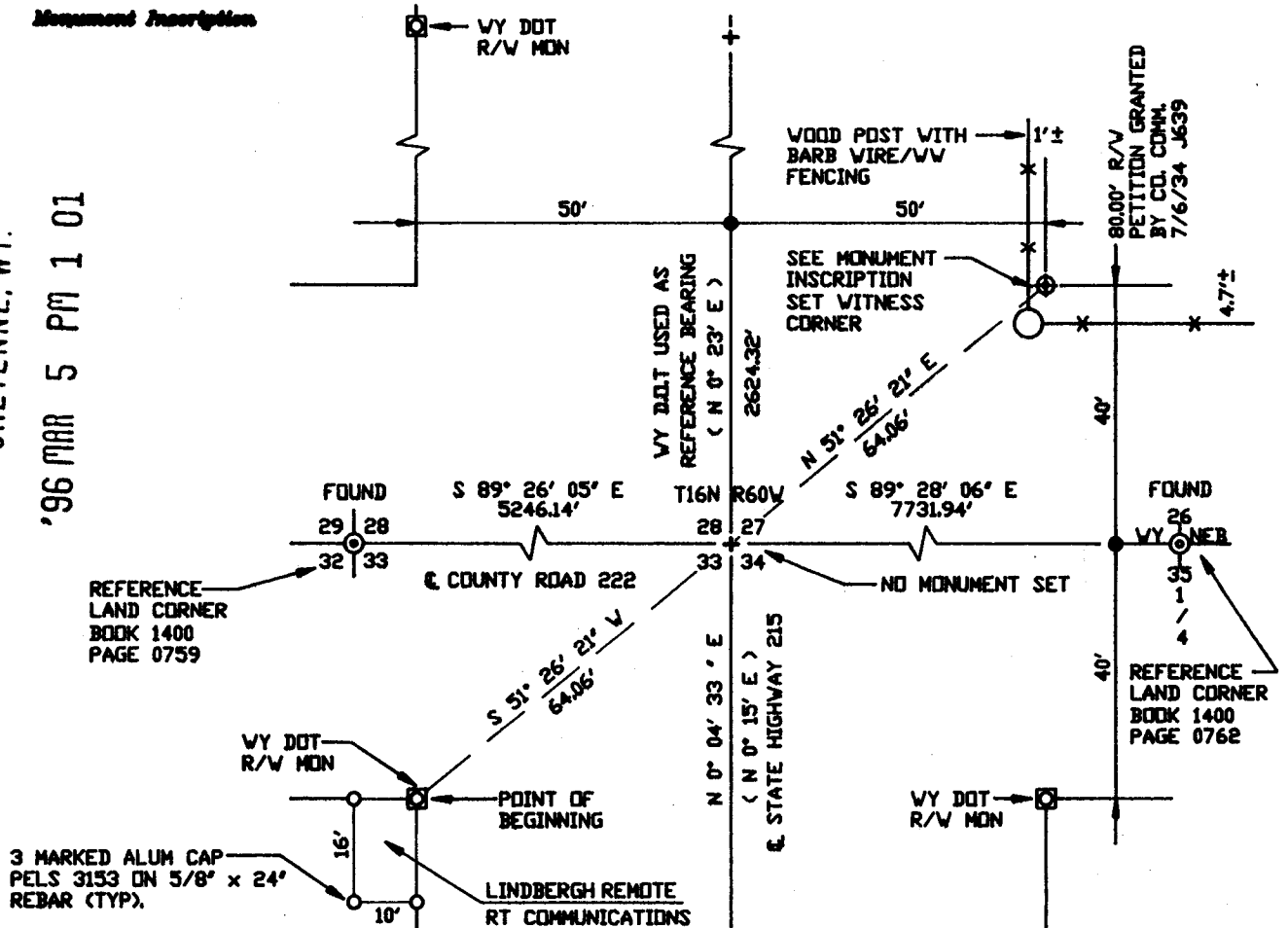
Monument Inscription



178686

LARAMIE COUNTY CLERK
CHEYENNE, WY.

'96 MAR 5 PM 1 01



Date of Field Work: 1/13/96 Office Reference: Field Book #44 page 37

CROSS INDEX DIAGRAM

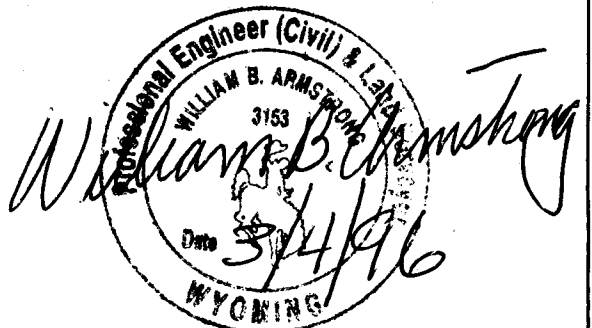
1	2	3	4	5	6	7	8	9	10	11	12	13	14	15	16	17	18	19	20	21	22	23	24	25
26	27	28	29	30	31	32	33	34	35	36	37	38	39	40	41	42	43	44	45	46	47	48	49	50

Firm/Agency, Address

ARMSTRONG
Armstrong Engineering Services
915 E. Carlson
Cheyenne, Wyoming 82009
(307) 632-2559

This corner record was prepared by me or under my direction and supervision.

SEAL & SIGNATURE



Corner Name: Section Corner Section: 28/27 33/34 T. 16N R. 60W; 6th P.M. Cross-Index No.: V-13
SBRPEPLS/PLSW: March 1994 (CLCR SJA)